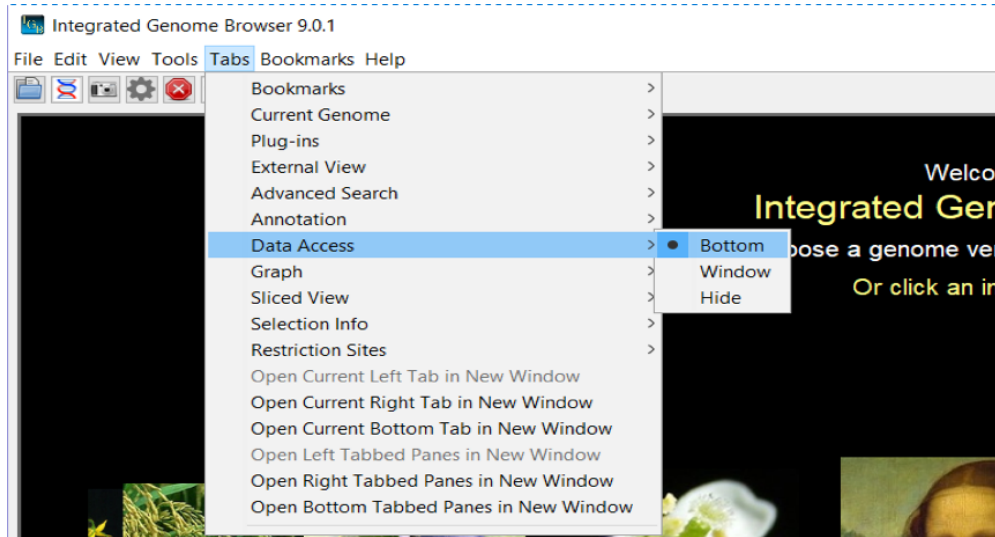


Tabbed Panels

General Function Checklist

Overview: When IGB first launches, the tabbed panels are part of the IGB main window. Using the Tabs menu, you can hide a panel, open it in a new window, or change its location in the main IGB display.



Side Tab Panels

Verify that these actions produce the expected behavior (like the images):

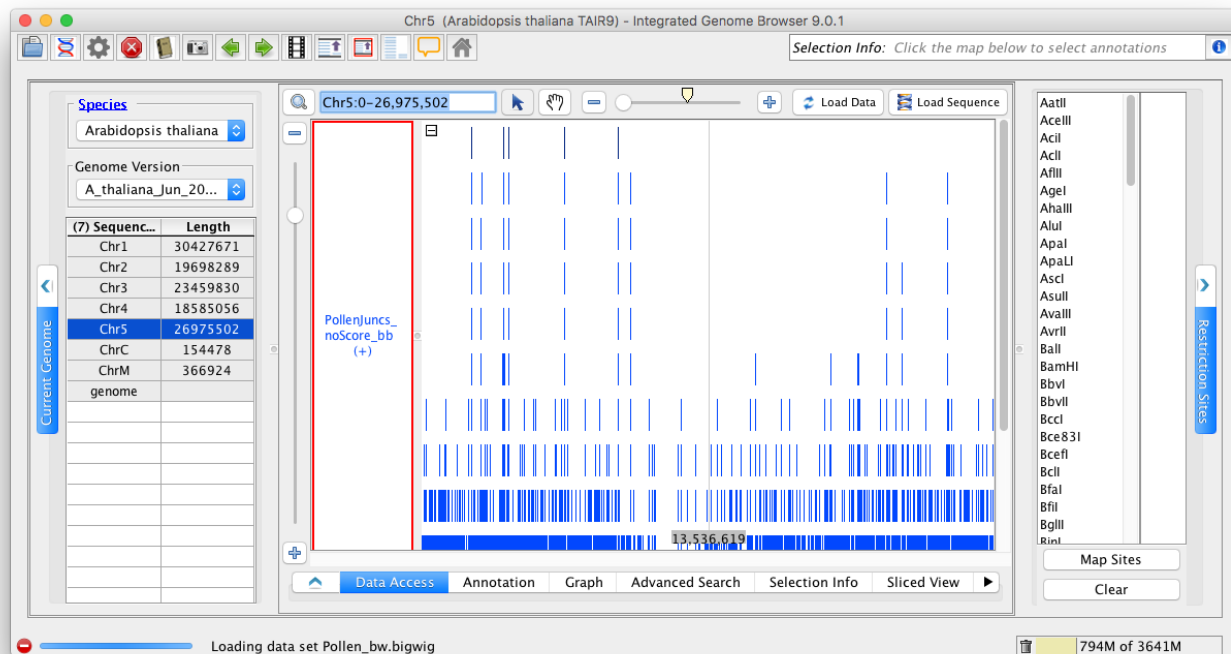
Move "Current Genome" to the left.

- ☐ mac
- ☐ linux
- ☐ windows

Click on any chromosome from any genome and verify that the main view goes to that chromosome.

- ☐ mac
- ☐ linux
- ☐ windows

Change "Bookmarks" to Hide by clicking hide/show icon (looks like > or <).

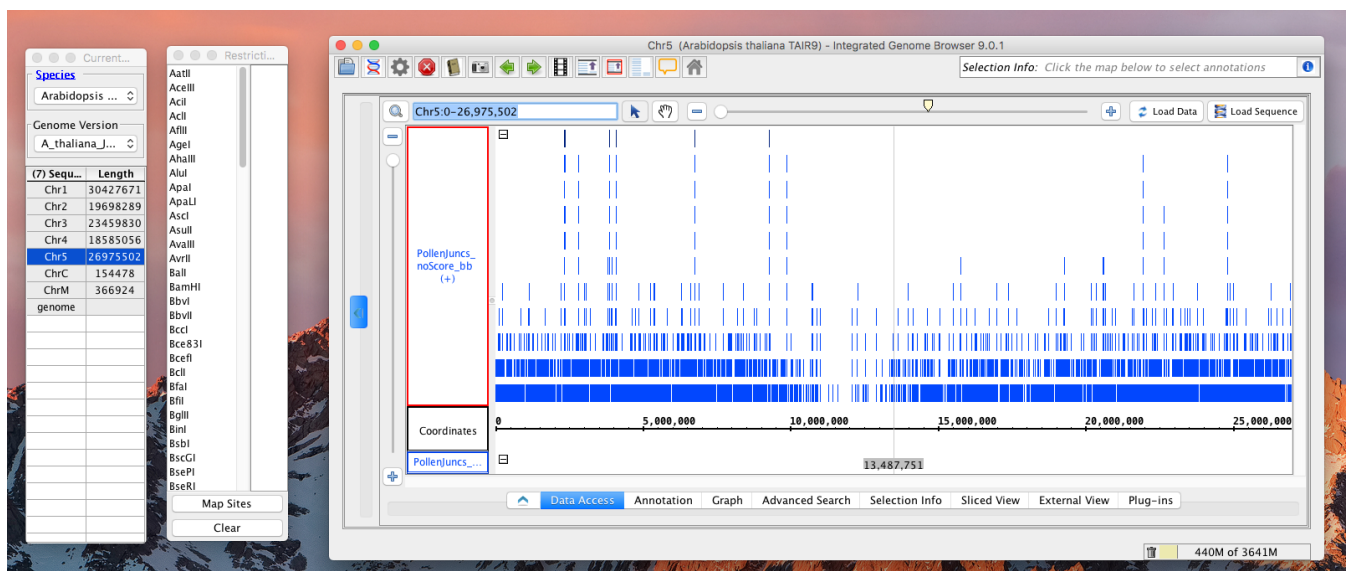


- ☐ mac
- ☐ linux
- ☐ windows

Select Open Current Left Tab in New Window.

- ☐ mac
- ☐ linux
- ☐ windows

Select Open Current Right Tab in New Window.



- ☐ mac
- ☐ linux

- ☐ windows

Change "Bookmarks" to Window.

- ☐ mac
- ☐ linux
- ☐ windows

Change "Bookmarks" to Right. Verify that this closes the "Bookmarks" window.

- ☐ mac
- ☐ linux
- ☐ windows

Close the two external windows using the [x] in the window. Verify that the panes are returned to the main IGB window.

- ☐ mac
- ☐ linux
- ☐ windows

Bottom Tab Panels

Verify same behaviors in the bottom tabs:

Move any tab to its own window, verify that the main view still responds to it.

- ☐ mac
- ☐ linux
- ☐ windows

Hide any tab.

- ☐ mac
- ☐ linux
- ☐ windows

Restore the hidden tab.

- ☐ mac
- ☐ linux
- ☐ windows

Open Bottom tabbed panes in new window.

- ☐ mac
- ☐ linux
- ☐ windows

Ensure the console output is correct.

- ☐ mac
- ☐ linux
- ☐ windows

Users Guide

Review the users guide on this topic: [Tabbed panels](#) (the child pages of this user-guide page are covered elsewhere). Verify that this page has accurate information and generally appears up-to-date.

- ☐ mac
- ☐ linux

☐ windows