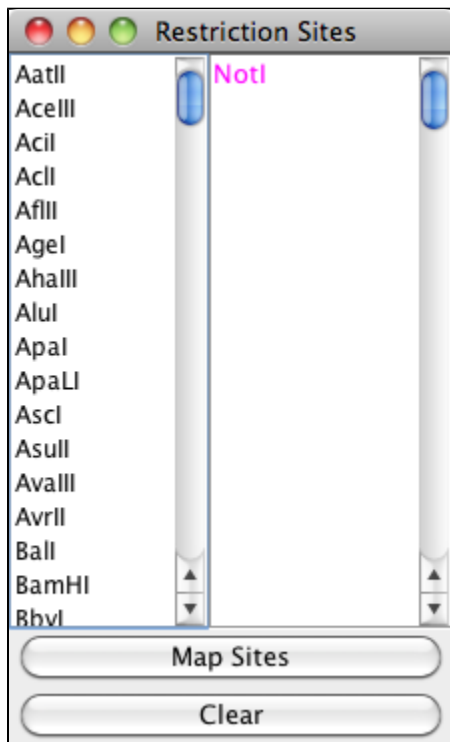


Restriction Sites

- [Introduction](#)
- [How to map sites](#)
- [Viewing results](#)

Introduction

The **Restriction Sites** tab maps restriction enzyme sites within the reference genomic sequence.



Restriction Sites tab

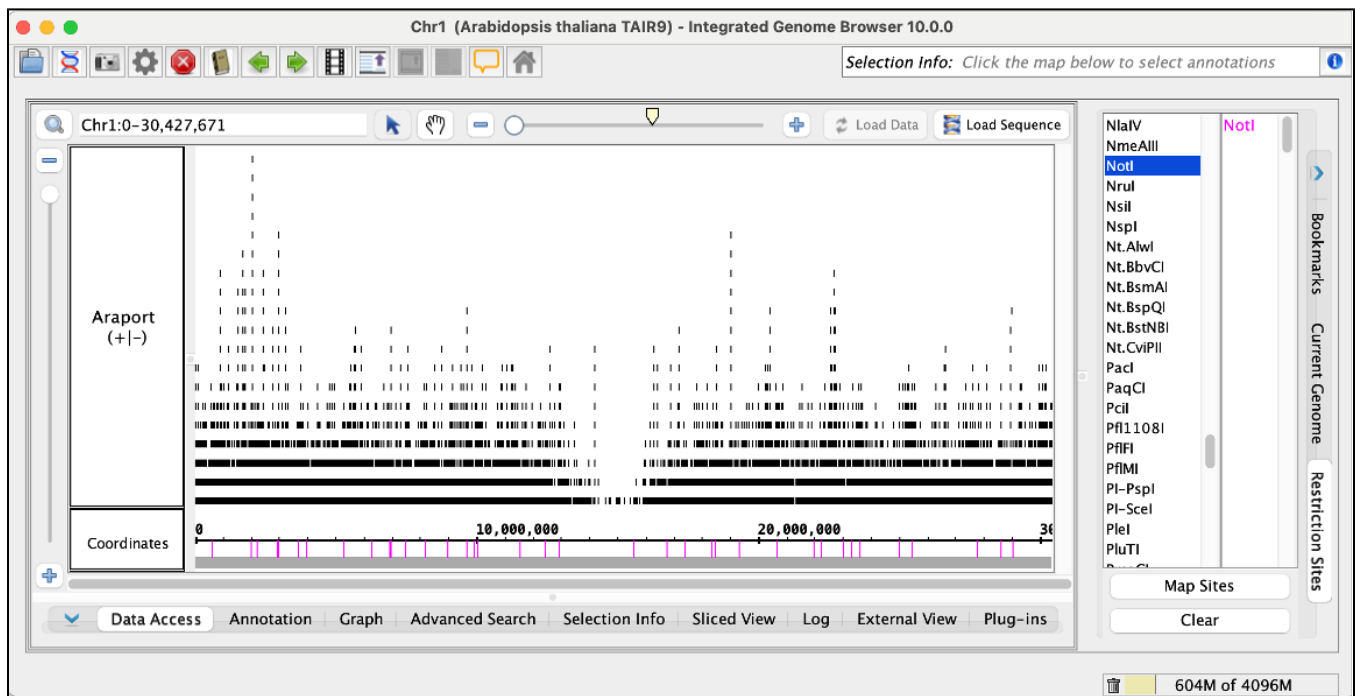
How to map sites

To display restriction enzyme sites:

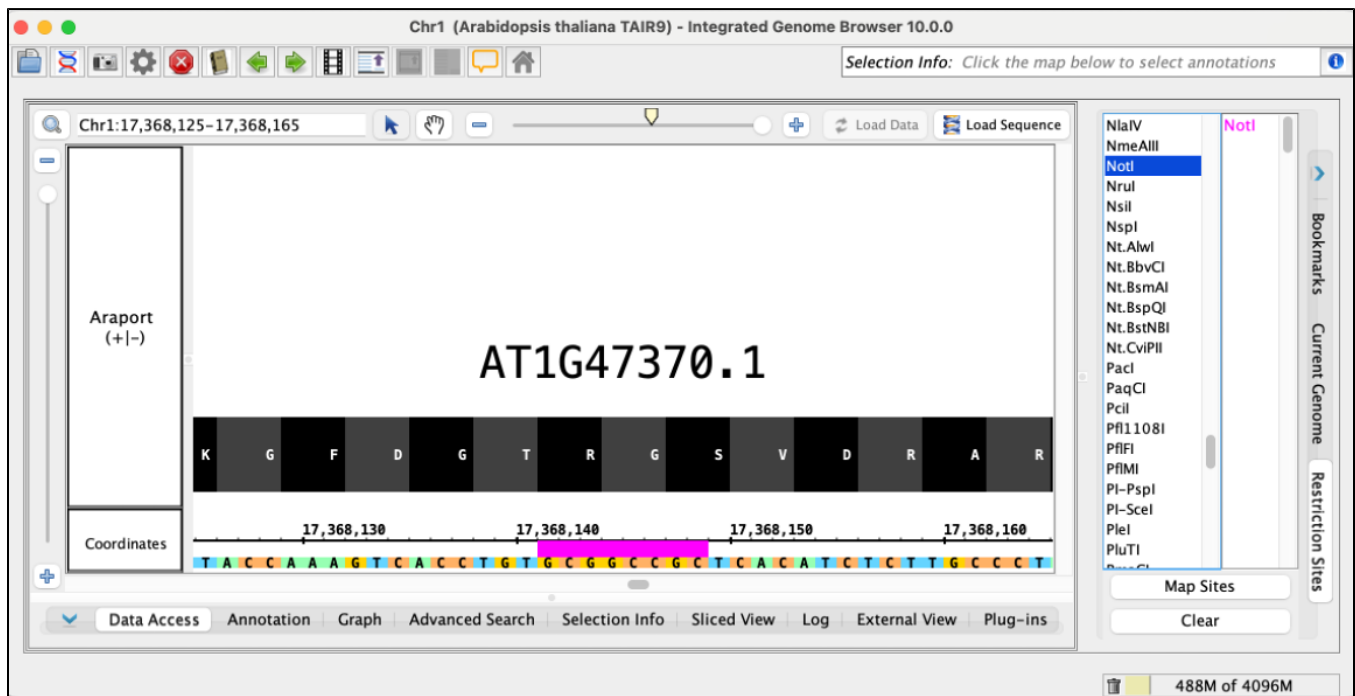
- Click the name of the restriction site you'd like to map in the **Restriction Sites** tab
 - Select multiple restriction sites by using Ctrl+Click to add them to the list of sites to map on the right
- Click **Map Sites**
- Click the **Clear** button to remove all sites.

Viewing results

Mapped sites are shown underneath the coordinate axis in the main view with colors that correspond to those displayed in the **Restriction Sites** tab. To zoom in on a restriction site, double-click it.



Zoomed-out view of restriction sites recognized by NotI (a rare cutter) mapped onto Chromosome 1 of the Arabidopsis thaliana genome



Zoomed-in view of a single NotI restriction site